

2 HOLES 3.2mm DIA.

4 HOLES 5mm DIA.

MATERIAL 1.6mm ALUM
BLACK ANODISED
ALL DIMENSIONS
IN MILLIMETRES.

	DIM. A	DIM. B	ANGLE
ITEM 1	110	40	75°
ITEM 2	130	50	60°
ITEM 3	170	60	45°
ITEM 4	230	70	30°

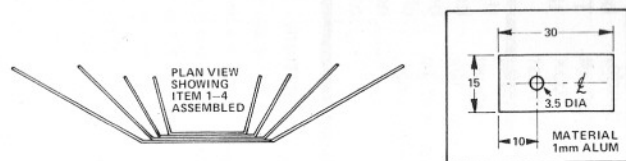


Fig. 10. Heatsink detail.

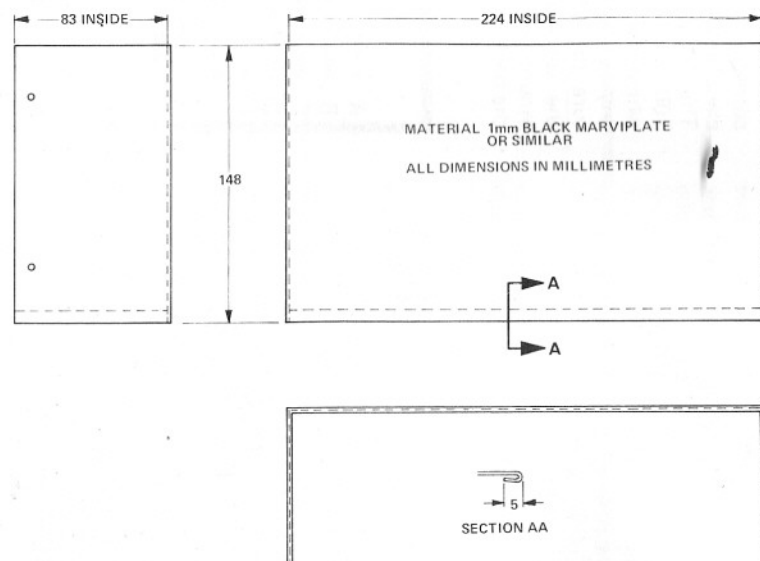


Fig. 13. Detail of metal cover.

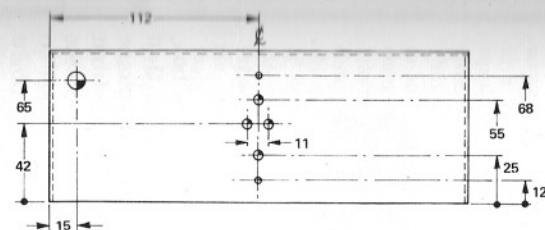
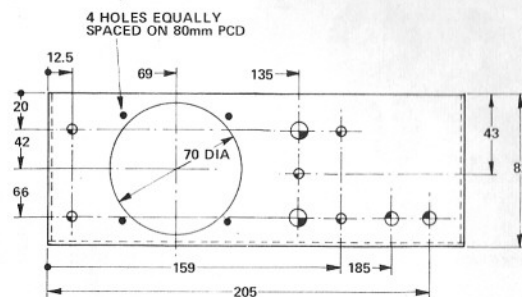
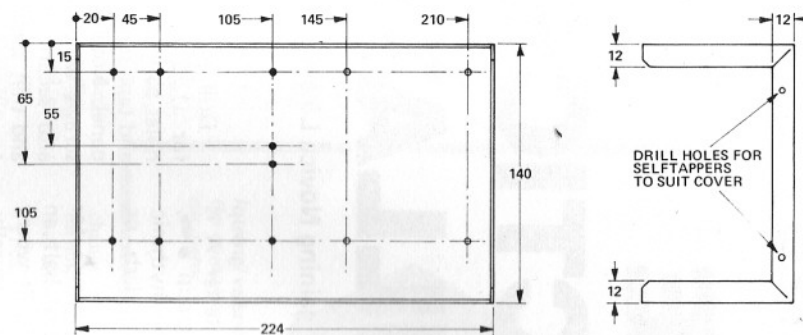
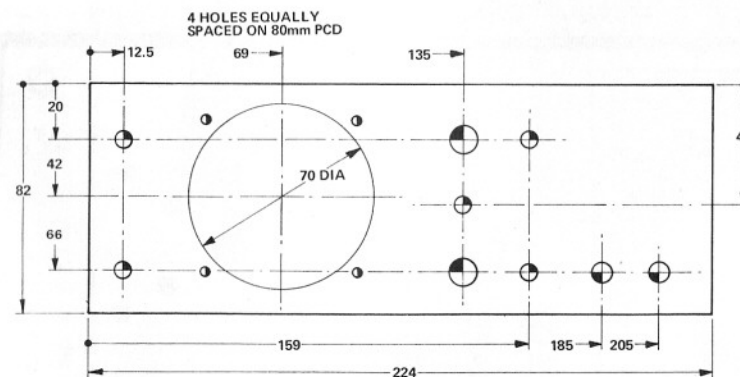


Fig. 11. Chassis metalwork.



- 6 HOLES 3.2mm DIA
- 12 HOLES 4mm DIA
- 4 HOLES 5mm DIA
- 5 HOLES 6.4mm DIA
- 2 HOLES 8mm DIA
- 3 HOLES 10mm DIA

ALL DIMENSIONS IN MILLIMETRES
MATERIAL 1mm STEEL



- 4 HOLES 4mm DIA
- 5 HOLES 6.4mm DIA
- 2 HOLES 8mm DIA
- 2 HOLES 10mm DIA

ALL DIMENSIONS IN MILLIMETRES
MATERIAL SATIN ANODISED ALUMINIUM
SILK SCREENED.

Fig. 12. Front panel drilling.