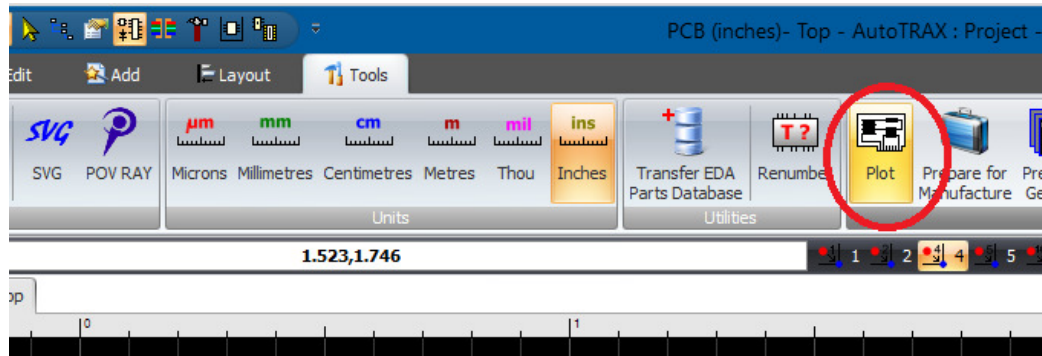
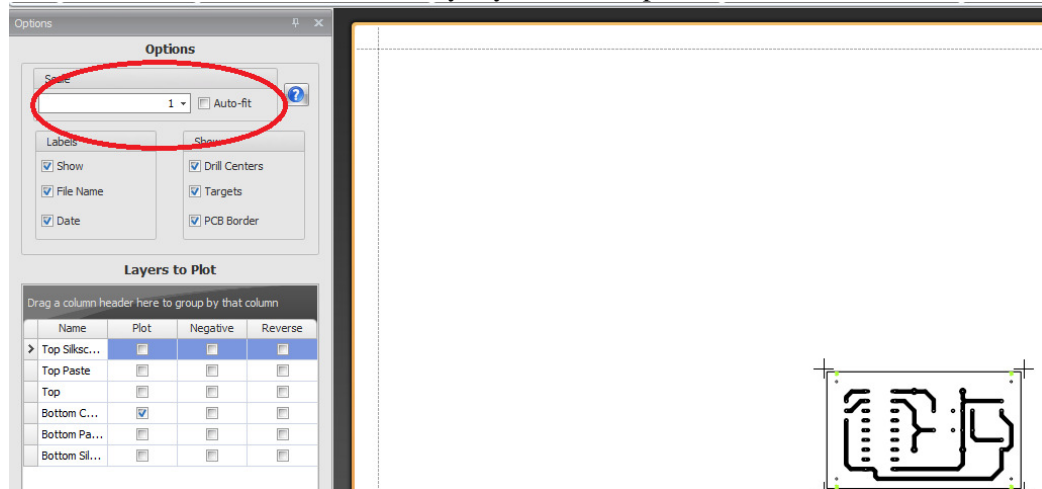


## Printing where you want to on the page.

Select 'Plot'

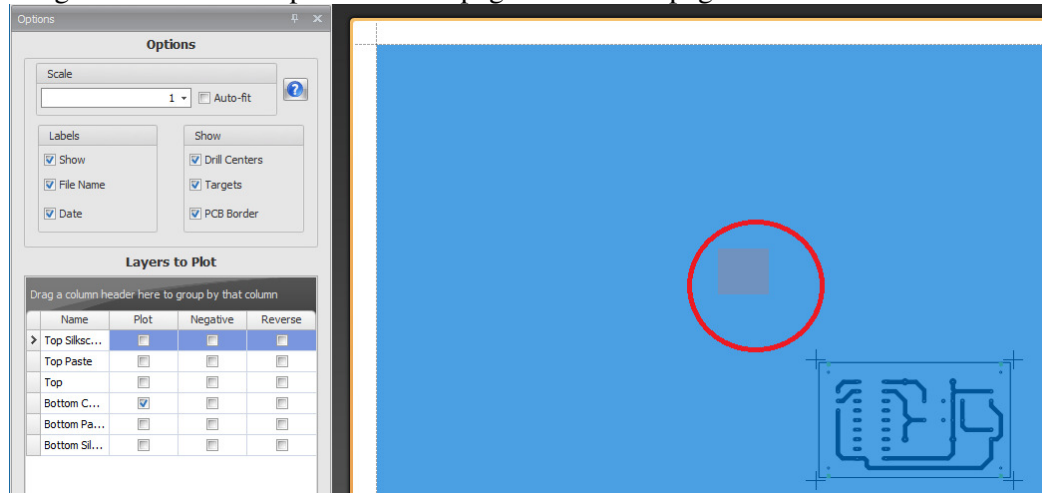


Select a scale of '1' and select the layer you want to print

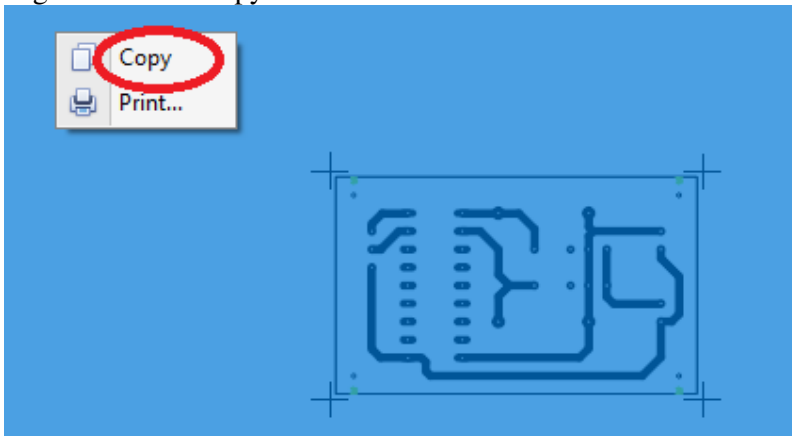


A full page preview of the page appears

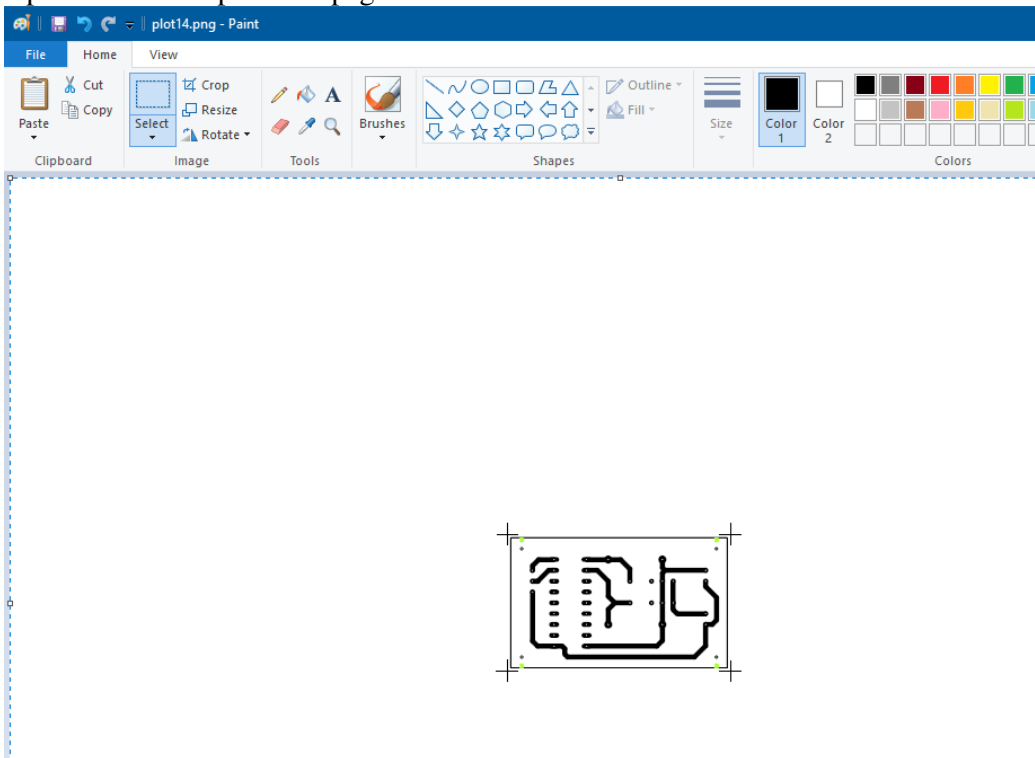
Drag the mouse over a portion of the page and the full page becomes selected:



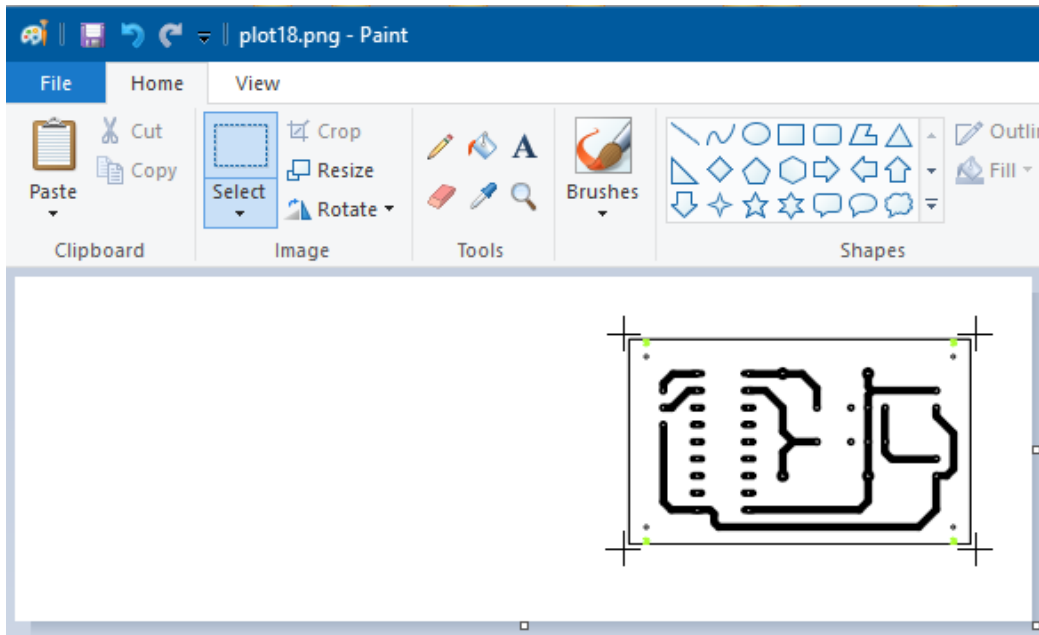
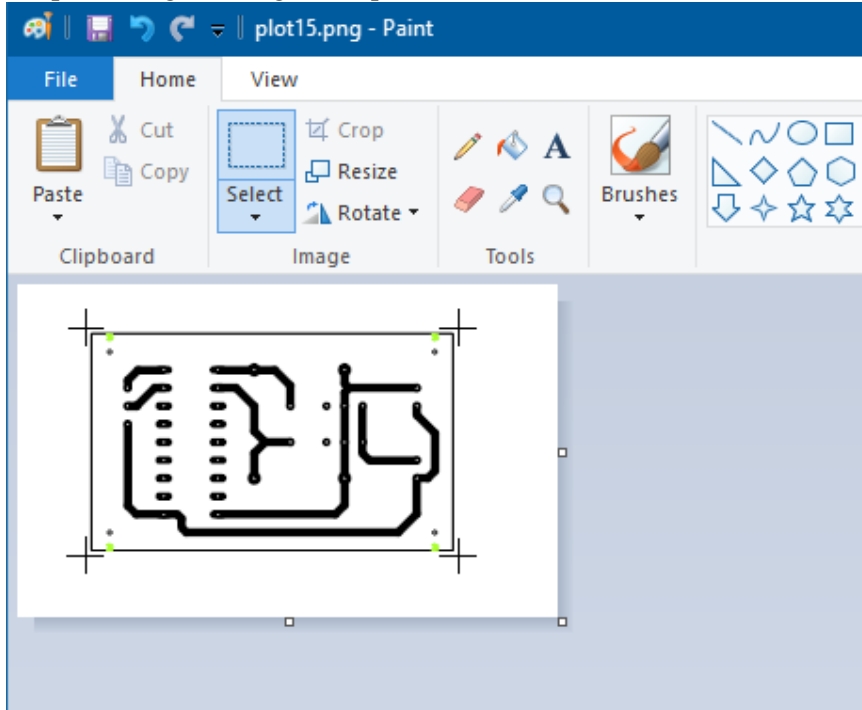
Right click and 'copy'



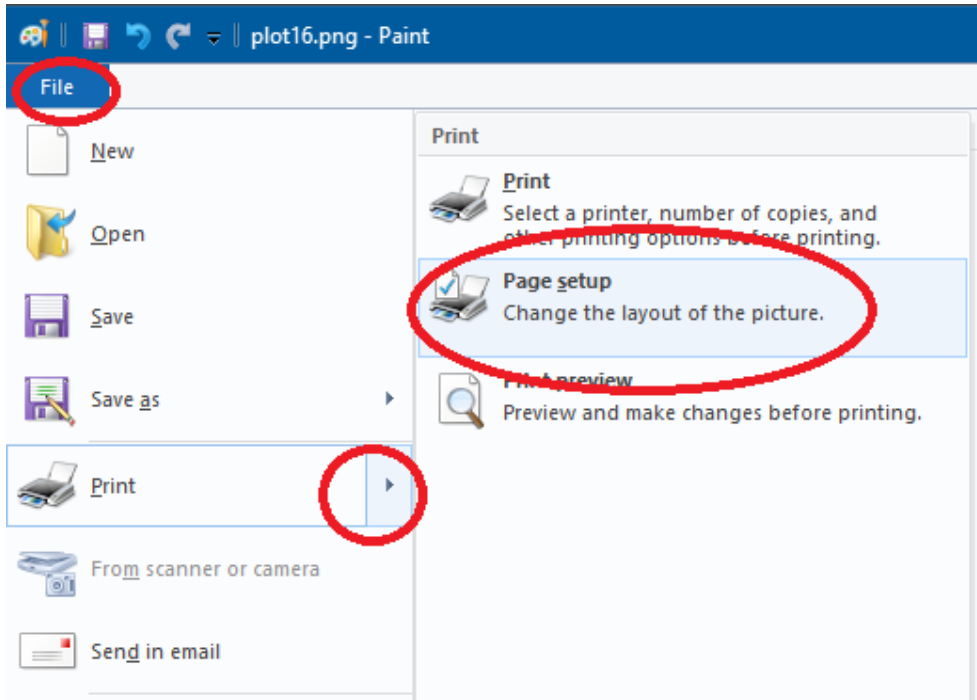
Open 'Paint' and paste the page.



Crop the image leaving the required size border.



You can also change the borders in page setup instead of using the white space when selecting to position the printout on the page.



Make sure that Adjust to 100% normal size is selected

